

BEASTLANDS

DESIGN YOUR OWN BEAST

WHAT IS YOUR BEAST'S NAME?

WHAT IS YOUR BEAST'S TYPE?

WHERE DOES YOUR BEAST LIVE?

WHAT ARE ITS SPECIAL SKILLS?

Piccadilly
PRESS



BEASTLANDS

BEASTLY MIX-UP

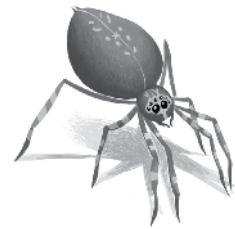
Can you match the BEASTS to their NAMES to help the three adventurers identify them correctly when they encounter them out in the wild BEASTLANDS?



1.



2.



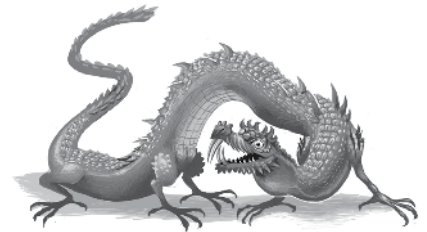
3.



4.



5.



6.



7.



8.



9.

WHICH BEAST NAME MATCHES THE BEASTS ABOVE?

A) Cliffcreeper

D) Salinka

G) Scuttleclaw

B) Grunthog

E) Pangron

H) Shadowy Bardfly

C) Heraldwing

F) Lava Bear

I) Webspinner

ANSWERS: 1=G, 2=A, 3=I, 4=H, 5=F, 6=D, 7=E, 8=B, 9=C

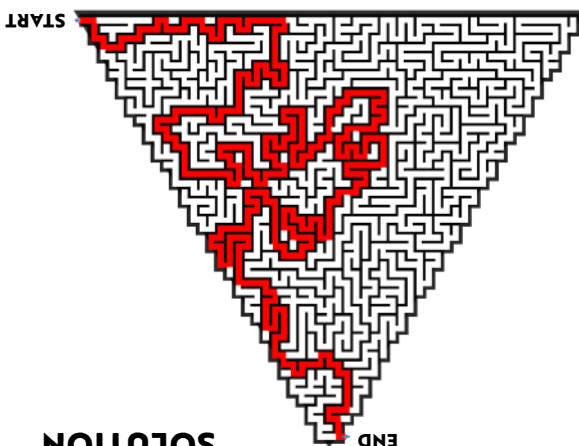
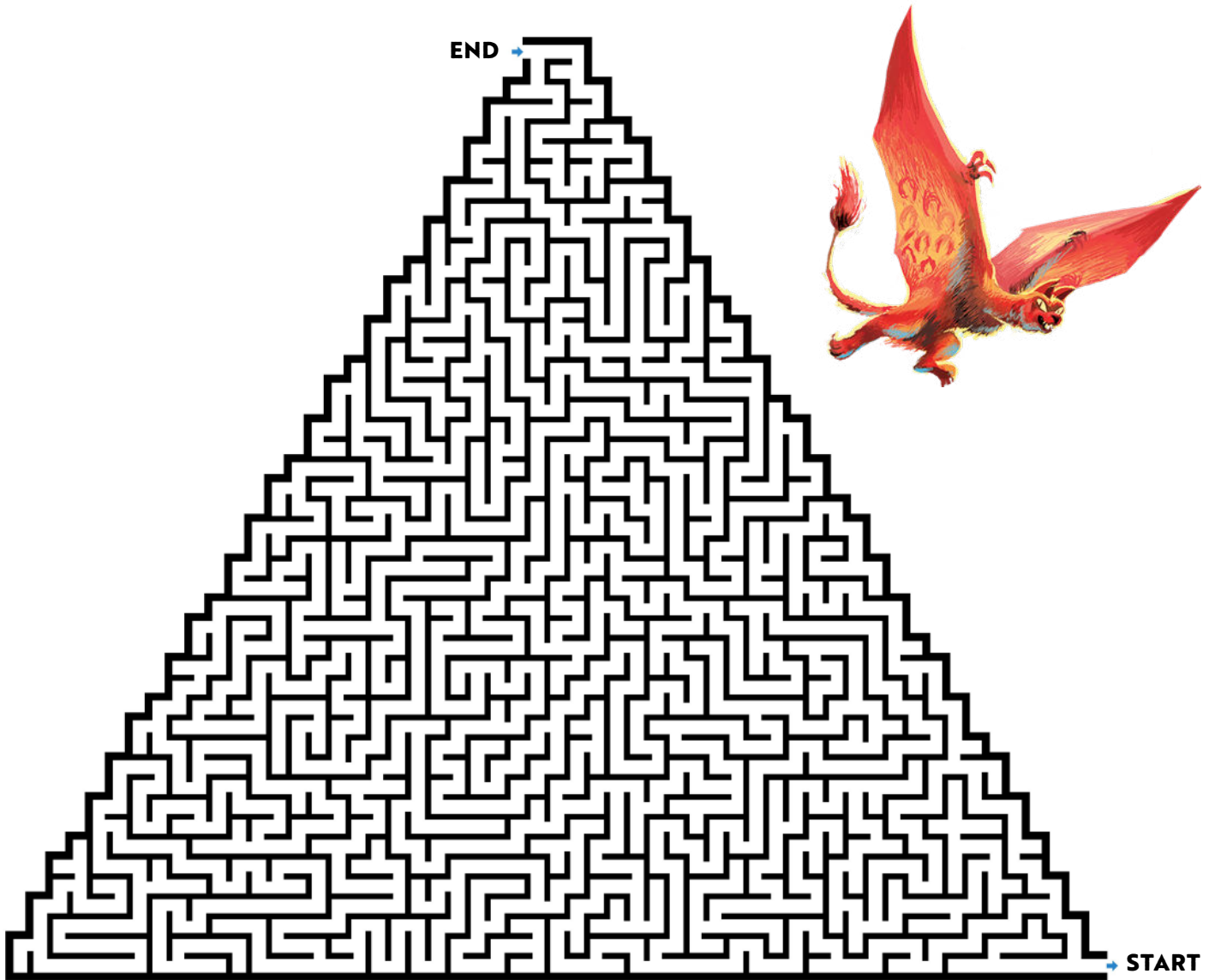
Piccadilly
PRESS



BEASTLANDS

RACE TO FROSTFALL MOUNTAIN

Can you help Kayla, Alethea and Rustus to reach the top of Frostfall Mountain in time?



NOIUTOS

Piccadilly
PRESS



BEASTLANDS

WILD WORDSEARCH

Can you find all of the names of the beasts from BEASTLANDS in the wordsearch below?

CLIFFCREEPER

F S I D L L P A N R E O T C I N R E A U
S G R W I A L N E E B G K R W S B L A R

GRUNTHOG

D M G C B O V N A E U T N P O Y A U S R
E M B O L D N A F I A R C W H L P E H S

HERALDWING

T K O I R I N D B E H S U E N F K L T E
I D B L P A H A P E Y R R O S D E L I C

LAVA BEAR

R U N S D P K A E F A A S Y O R C H G E
N O B A I S E N D M L R A H S A I V E K

PANGRON

B E H S T O A Y I D B W I N S B P A E D
W M T R N S E A W L A Z O M F Y C B O E

SALINKA

R N F G C V E I A L A G R O C W I G B M
O R U E I N N O C S A S R B K O A G T O

SCUTTLECLAW

E L A N C G W E M R E O S L D D T B A Y
O U R P D H L S T N V O T D A A P C S T

SHADOWY BARDFLY

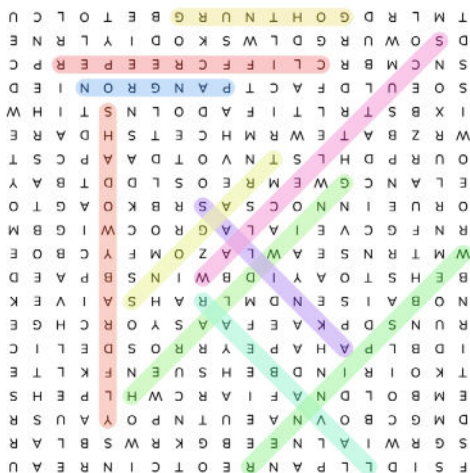
W R Z B A T E W R M H C E T S H D A R E
I X B S T R L T I F A D O L N S T I H W

SNOGART

S O E U L D F A C T P A N G R O N I E D
S N C M B R C L I F F C R E E P E R P C

WEBSPINNER

D S O W U R G D L W S K O D I Y L R N E
T M L R D G O H T N U R G B E T O L C U



NOILNOS

Piccadilly
PRESS

BEASTLANDS

DISCUSSION QUESTIONS

1. How does the author use world-building to create the setting of BEASTLANDS?
What aspects of the setting contribute to the atmosphere of the story?
How are the cities and realms different from one another and what does this tell about them?
2. What themes or messages do you think the author is trying to convey through the adventures of the characters in BEASTLANDS?
3. Discuss the character development throughout the book.
Which character do you find the most compelling, and why?
4. How does the author handle the topic of friendship and loyalty in the story?
Are there any particular scenes or relationships that stood out to you?
5. Explore the concept of courage as depicted in the book.
How do different characters demonstrate bravery in their journey to Frostfall Mountain?
6. What role do the beasts play in the narrative? How do they contribute to the plot and character development?
7. Discuss the environmental themes present in the story.
How does the author address issues like conservation and the impact of human activity on nature?
8. Consider the significance of the title, "Race to Frostfall Mountain." How does the journey to Frostfall Mountain drive the plot forward, and what does reaching the mountain represent for the characters?
9. Explore the concept of family in the story. How do the characters' relationships with their families shape their actions and decisions throughout the adventure?
10. Consider the role of adversity in the characters' journey. How do they overcome challenges and setbacks, and what does this reveal about their strengths and weaknesses?
11. Discuss the significance of the magical elements in the book. How do these elements enhance the storytelling and contribute to the overall fantasy atmosphere?
12. Reflect on the moral dilemmas faced by the characters. Are there any instances where characters must make difficult decisions between what is right and what is easy?
How do these choices impact the outcome of their journey?
13. Analyze the narrative structure of the book. How does the author use foreshadowing, flashbacks, multiple POV, cliffhangers or other literary devices to build tension and keep readers engaged?
14. Analyze the pacing of the book. Did you find it engaging throughout?
How did the pacing affect your enjoyment of the story?
15. Reflect on the ending of the book. Did it meet your expectations?
Were there any unresolved plot points or themes that you wish had been explored further? What do you think might happen in book two?

